

THE APOLLO TERRACES | WEST TERRACE



Tiered seating on the West Terrace allows groups of friends to gather for drinks or dinner while enjoying a sunset view over the city. Kebony, a sustainable alternative to tropical hardwoods originally developed in Norway, is used throughout the terrace. The project achieved a LEED Gold rating.

THE APOLLO TERRACES | WEST TERRACE LOUNGE



The expansive West Terrace provides a variety of social spaces including a lounge area defined by an overhead trellis. Overhead lighting and spectacular views over the city make this a favorite location for private outdoor parties.

THE APOLLO TERRACES | EAST TERRACE



The East Terrace provides an alternative to the expansive west terrace more suited to grilling and dining with bench seating and tables and chairs. Sun-loving plant materials include Yucca, Feather Grass and Hawthorns.

THE APOLLO TERRACES | EAST TERRACE GRILLING AND DINING



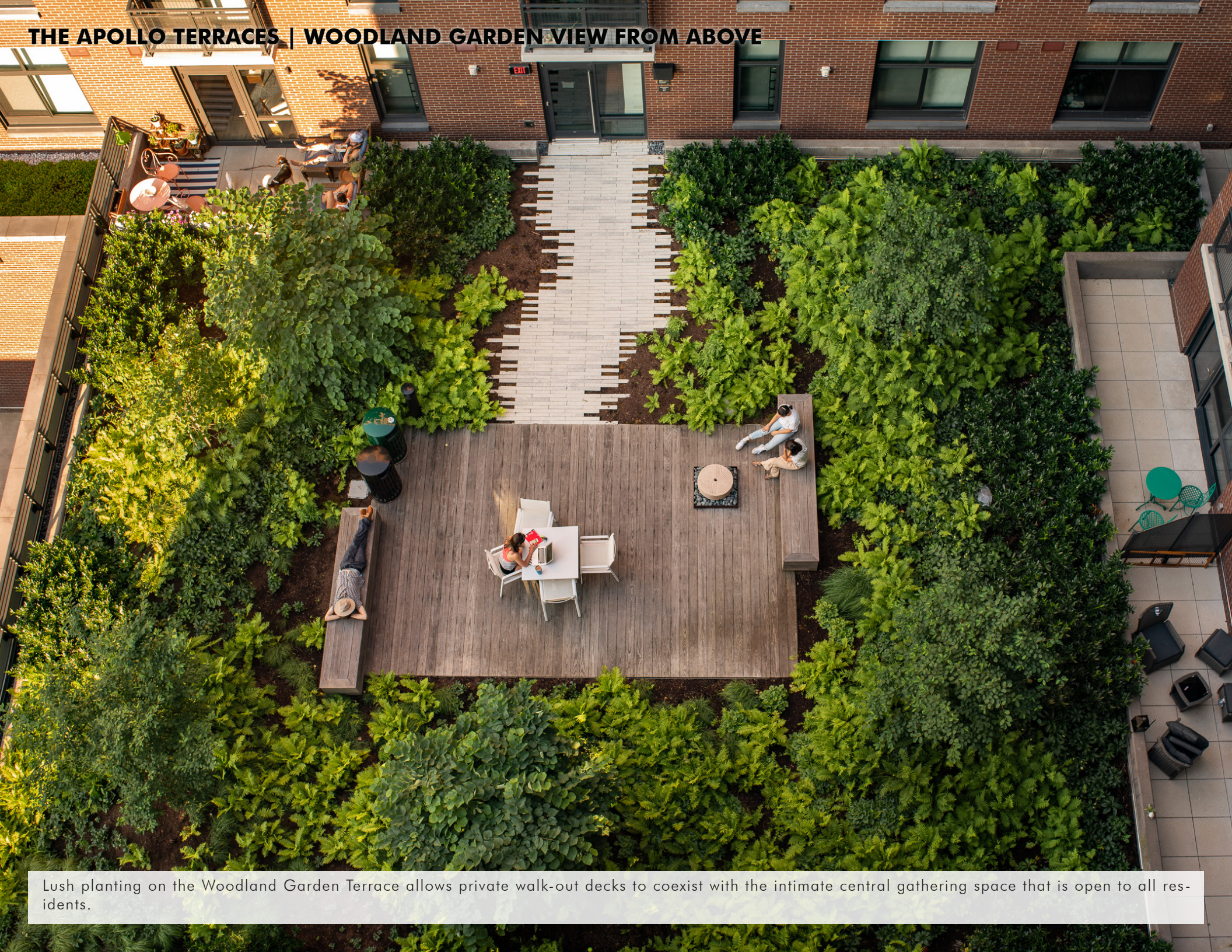
Much of the East Terrace is dedicated to four outdoor dining rooms. Yucca, tall ornamental grasses, and climbing vines on the penthouse wall provide a more intimate alternative to the exposed West Terrace.

THE APOLLO TERRACES | WOODLAND GARDEN SEATING AREA



The Woodland Garden Terrace is more a more secluded alternative to the active rooftop terraces. A palette of ferns and shade-loving trees lends the space a distinctive character

THE APOLLO TERRACES | WOODLAND GARDEN VIEW FROM ABOVE



Lush planting on the Woodland Garden Terrace allows private walk-out decks to coexist with the intimate central gathering space that is open to all residents.

THE APOLLO TERRACES | GALLERY GARDEN SEATING AREA



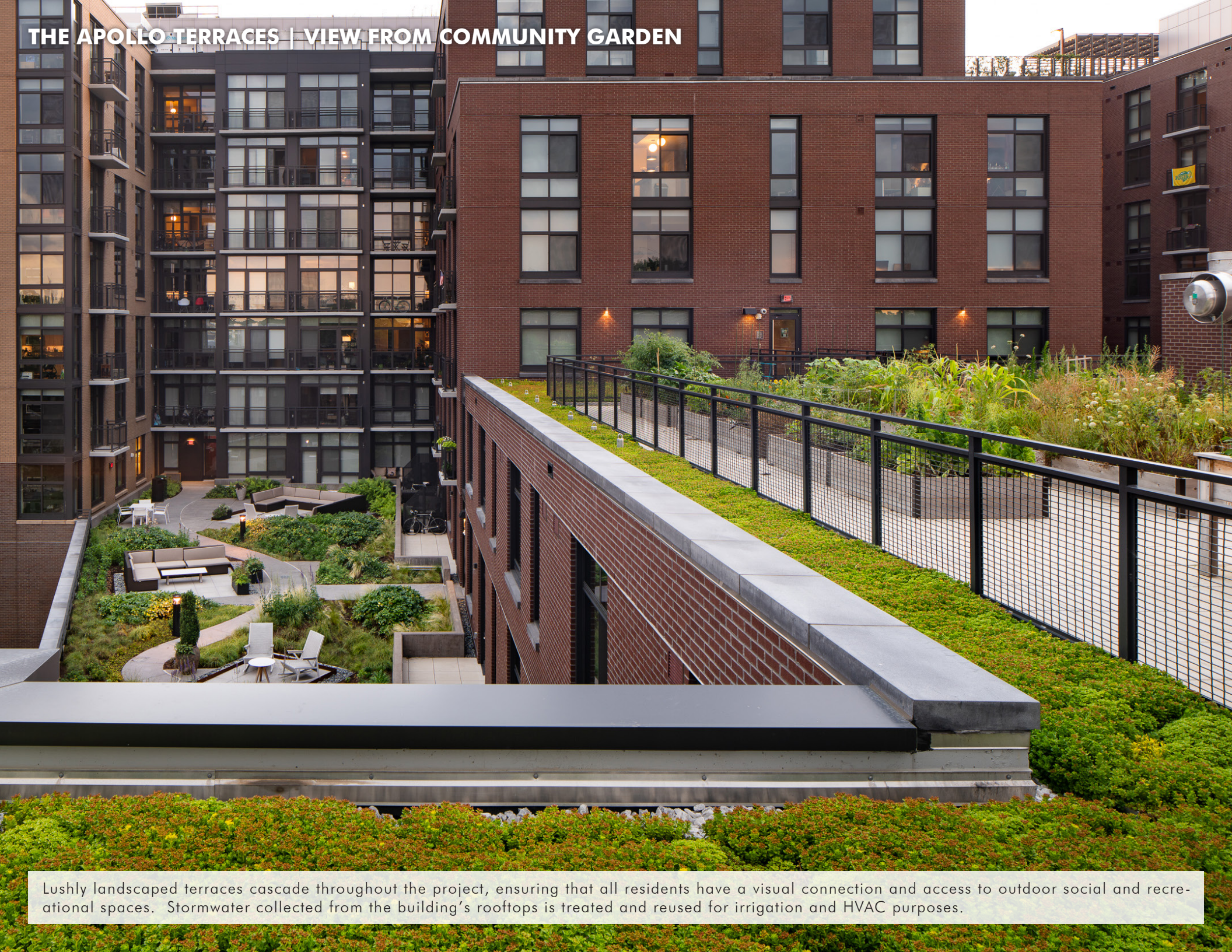
The Gallery Garden includes a series of small social spaces linked by a meandering walk.

THE APOLLO TERRACES | GALLERY GARDEN ENTRY



Oriented toward the east, the Gallery Garden provides residents with a series of gathering areas that are relatively sheltered from the afternoon sun and include views out over the neighborhood.

THE APOLLO TERRACES | VIEW FROM COMMUNITY GARDEN



Lushly landscaped terraces cascade throughout the project, ensuring that all residents have a visual connection and access to outdoor social and recreational spaces. Stormwater collected from the building's rooftops is treated and reused for irrigation and HVAC purposes.

THE APOLLO TERRACES | COMMUNITY GARDEN



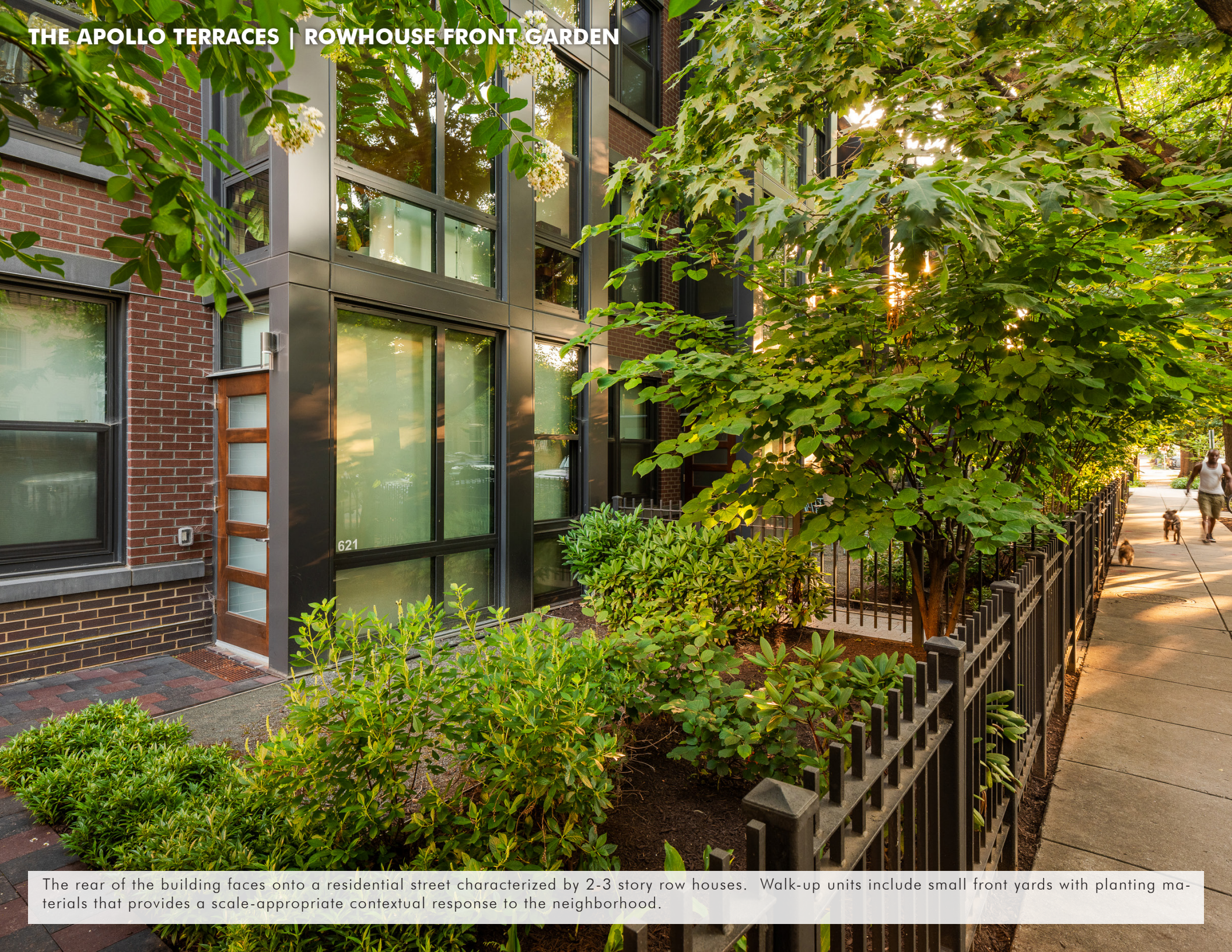
A community garden is located on an open terrace in order to optimize access to sunlight. Extensive green roof planting was instrumental in helping the project to meet local stormwater regulations. One hundred percent of plant waste from garden maintenance is composted on-site for use in the rooftop agriculture.

THE APOLLO TERRACES | STREETSIDE PLAZA



A small outdoor dining court flanks the building entry and contributes to the project's progressive stance toward inviting the public into the day to day life of the building. Stone pavers and exposed aggregate concrete help create a distinctive streetscape.

THE APOLLO TERRACES | ROWHOUSE FRONT GARDEN

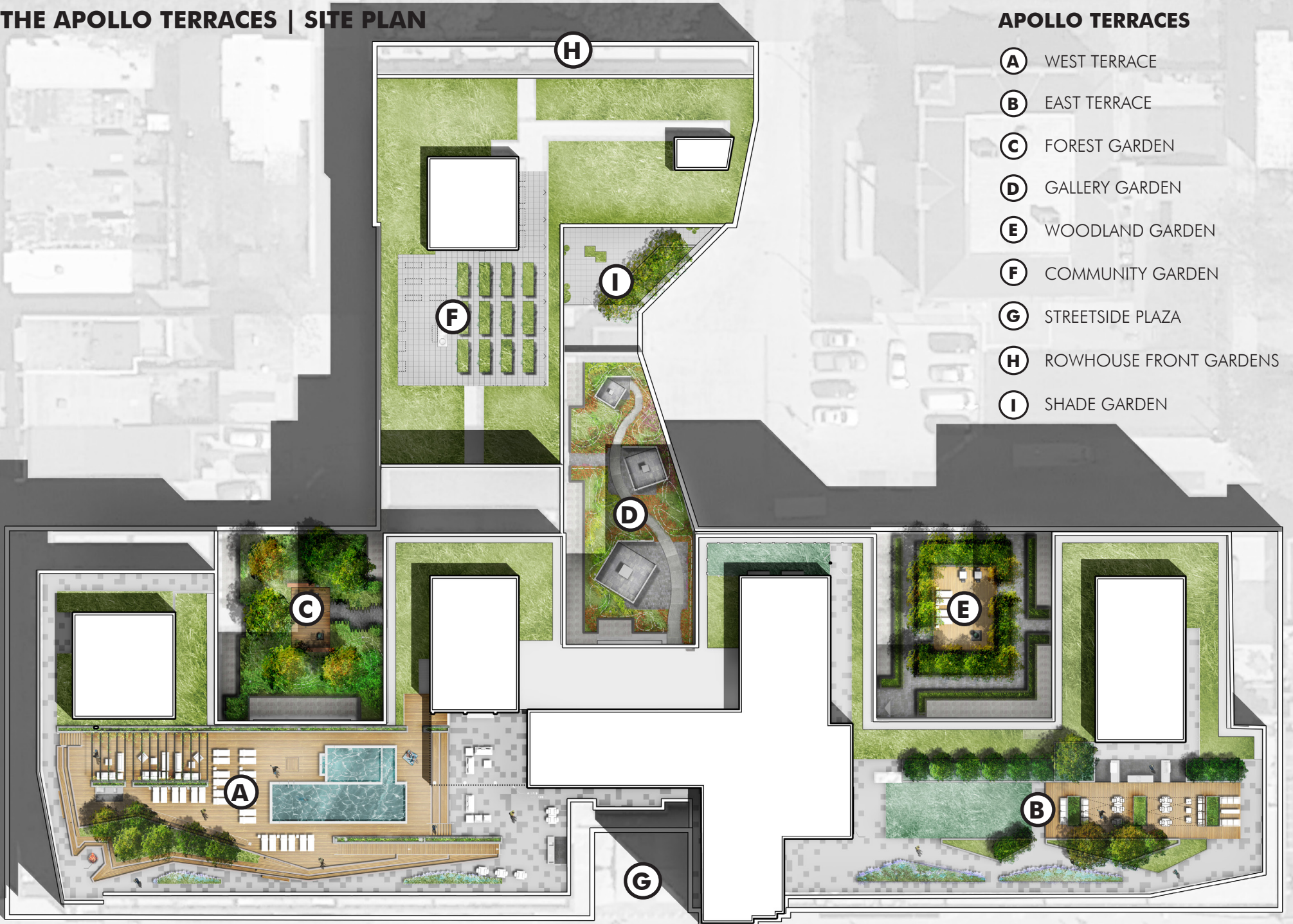


The rear of the building faces onto a residential street characterized by 2-3 story row houses. Walk-up units include small front yards with planting materials that provides a scale-appropriate contextual response to the neighborhood.

THE APOLLO TERRACES | SITE PLAN

APOLLO TERRACES

- (A)** WEST TERRACE
- (B)** EAST TERRACE
- (C)** FOREST GARDEN
- (D)** GALLERY GARDEN
- (E)** WOODLAND GARDEN
- (F)** COMMUNITY GARDEN
- (G)** STREETSIDE PLAZA
- (H)** ROWHOUSE FRONT GARDENS
- (I)** SHADE GARDEN



The Apollo Terraces project includes a total of seven distinctive terraces that provide residents with a wide variety of spatial, social, and programmatic options.